



Sharpley Court, Coventry, CV2 2SQ

Loveitts
PART OF | SHELDON BOSLEY KNIGHT

Property Description

We're pleased to welcome to the market this three-bedroom semi-detached home, offering an excellent opportunity for first-time buyers, growing families, or buy-to-let investors.

Sharpley Court is well located for day-to-day convenience, being close to a range of local shops, reputable schools, major supermarkets, and regular bus routes, making commuting and daily errands easy and accessible.

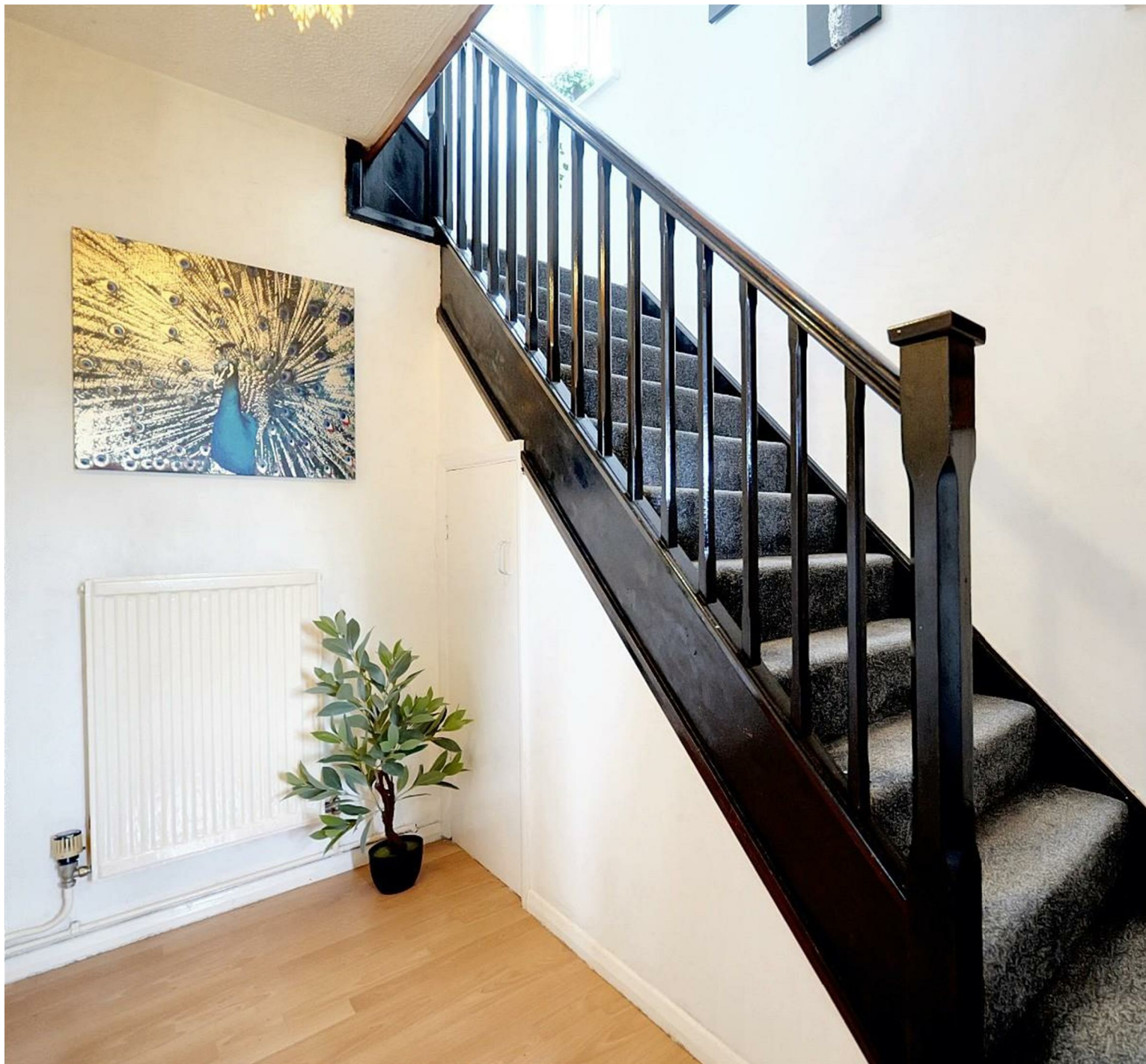
The ground floor comprises an entrance hallway, a fitted kitchen, and a spacious lounge/diner ideal for modern living. Upstairs, there are three good-sized bedrooms and a family bathroom.

Outside, the home offers a generous rear garden, a driveway to the front providing off-road parking, and access to a garage.

Early viewing is highly recommended — call us today to secure your appointment.

The property is currently a shared ownership property but is but offered at 100% so it currently leasehold however on completion, to our understanding, this property will become Freehold





Key Features

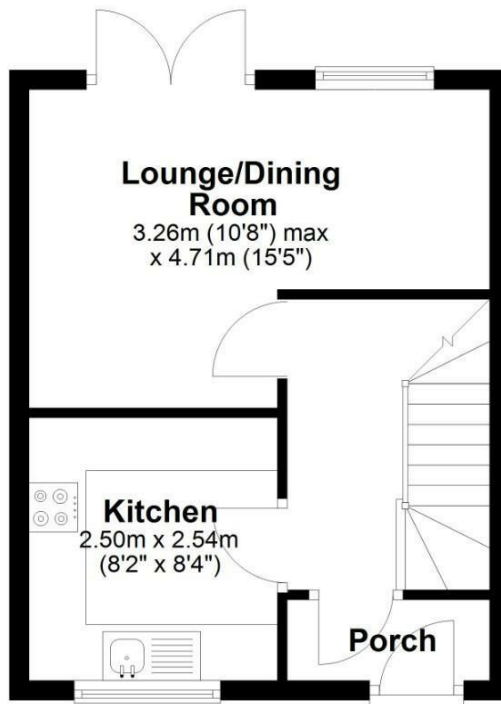
- SOUGHT AFTER AREA OF WALSGRAVE
- THREE BEDROOM SEMI DETACHED PROPERTY
- PERFECT FAMILY HOME
- OFF ROAD PARKING
- CLOSE PROXIMITY TO SEVERAL LOCAL SCHOOLS
- SHORT WALK FROM MAJOR BUS ROUTES
- GREAT INVESTMENT
- VERY SPACIOUS ROOMS
- IDEAL FOR FIRST TIME BUYERS
- EPC- D

**Offers Over
£200,000**



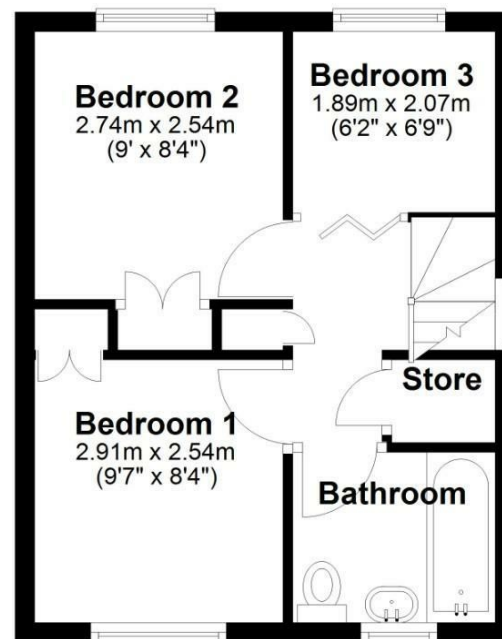
Ground Floor

Approx. 27.5 sq. metres (295.8 sq. feet)



First Floor

Approx. 29.0 sq. metres (312.0 sq. feet)



Total area: approx. 56.5 sq. metres (607.8 sq. feet)



EPC Rating - D

Tenure - Freehold

Council Tax Band - C

Local Authority
Coventry City Council

We routinely refer clients to both our recommended Legal Firm and a panel of Financial Services Providers. It is your decision whether you choose to deal with these companies. In making that decision, you should know that we receive a referral fee



To view this property please contact our Loveitts Coventry (Sales) office
on 02476 258421

Loveitts

PART OF | SHELDON BOSLEY KNIGHT